

## FACT FILE

## THE BRIEF

Build a second-storey addition that is integrated with the existing house, provide extra space and take advantage of the view

## THE BUILDER

Sam Maugeri, Alpine Designer Homes



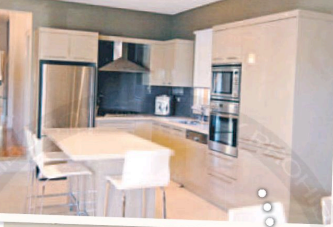
BEFORE



AFTER

**A** Four bedrooms, a rumpus and a study were added in the upstairs addition **B** Extra polyurethane cabinets were installed **C** Cedar cladding matches the window frames

BEFORE



AFTER



# Getting to the top

Merging another storey on to a relatively new renovated dwelling proved an interesting challenge

## Describe the changes you made.

It was a single-storey bungalow that had been renovated seven years earlier. The client wanted some more entertainment space for the kids, but because the house was already renovated they didn't want to touch the existing areas downstairs. What we [Sam and architect Albert Becerra] decided to do was keep the two bedrooms downstairs – one became a study. To add more space, upstairs we created a rumpus and a second study – because the client runs his own business – as well as four bedrooms.

## Given that you enlarged the already-renovated kitchen, were there any challenges in matching the finishes?

Yes, with the polyurethane kitchen cabinets. Over the first three years

polyurethane changes naturally in colour, so we made sure we used the original colour. The kitchen cabinet guy told us that it is the first six to 12 months when it changes the most, so when it was installed you could slightly tell the colours were different but if you walked in there today, you couldn't pick what is new and what is old.

## The brief for the project was to make the house look new and make sure the second level did not appear plonked on top. How did you achieve this?

Because we had to be careful about how much extra weight we put on the existing house, what we decided to do was use a foam product for the walls upstairs. We texture-coated them and also texture-coated the old render to give it the same

finish. The bit that steps in on the second level is clad in cedar, which matches the downstairs window frames.

## What is your favourite part of the renovation?

I really like the entry, the void. The way the open staircase turned out, it just feels like that was the staircase that was always meant to be there. And it doesn't encroach on the existing space at all. It feels like the house was built with that staircase in it from day one.

● **MORE INFORMATION**  
**Alpine Designer Homes**  
 9428 4777, [alpineprojects.com.au](http://alpineprojects.com.au)  
**Architects Becerra** 9557 2288,  
[www.archb.com.au](http://www.archb.com.au)